

# Letter of Agreement

## Philadelphia TRACON (PHL) & Potomac TRACON (PCT)

Rev. 1 — May 20, 2014

### Purpose

This agreement prescribes transfer of control procedures, radar handoff procedures, route/altitude assignments, and delegation of airspace between Philadelphia TRACON (PHL) and Potomac TRACON (PCT).

### Cancellation

PHL and PCT Letter of Agreement, dated March 19, 2008, is hereby cancelled.

### Scope

The procedures contained herein shall apply unless prior coordination is effected.

### PHL TRACON Departure Procedures

- a. Departures from PHL TRACON to PCT TRACON
  - i. All aircraft shall be cleared to the destination airport via the routes and altitudes described in **Attachment 1**. Routes and altitudes other than those depicted in this LOA shall be on an APREQ basis.
  - ii. Flights with destinations to BWI and DCA will be handed off to Potomac Approach (or Washington Center if Potomac Approach is offline) after passing MXE should New York Center not be manned.

### PCT TRACON Departure Procedures

- a. Departures from PCT TRACON to PHL TRACON
  - i. All aircraft shall be cleared to the destination airport via the routes and altitudes described in **Attachment 2**. Routes and altitudes other than those depicted in this LOA shall be on an APREQ basis.

**Attachment 1 – Departures from PHL to PCT**

<b>From</b>	<b>To</b>	<b>Route</b>	<b>Altitude Restriction</b>
<b>PHL N Sats</b>	<b>BWI &amp; Sats / DCA &amp; Sats</b>	MXE V378 BAL	10,000' / Jets 6,000' or 8,000' / Props
<b>PHL &amp; PHL S Sats</b>	<b>BWI &amp; Sats / DCA &amp; Sats</b>	DQO V166 BELAY V378 TRISH CLIPR CLIPR#	10,000' / RNAV JETS ONLY
		DQO V166 BELAY V378 BAL	10,000' / NON-RNAV JETS
		ENO V16 CHOPS V308 OTT DCA	6,000'-8,000' / TURBOPROPS
<b>PHL Area</b>	<b>IAD &amp; Sats</b>	V408 ROBRT AML	8,000' / 210kts or less
	<b>TEC via MRB</b>	V408 ROBRT V143 MRB	8,000' / 210kts or less

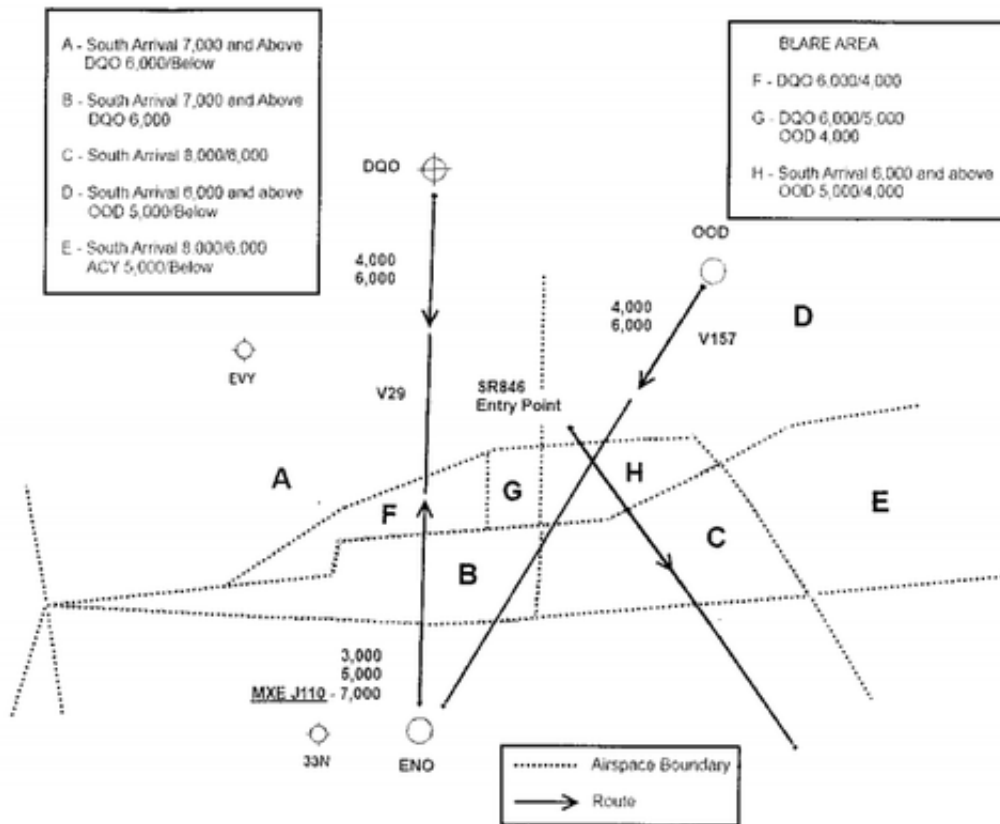
**Attachment 2 - Departures from PCT to PHL**

<b>From</b>	<b>To</b>	<b>Route</b>	<b>Altitude/Restriction</b>
<b>WRI Area</b>	<b>PHL</b>	V433 DQO	9,000' Jets
		ODESA OOD	5,000' / Turboprops 4,000' / 180kt or less
	<b>PHL N Sats</b>	V433 DQO	11,000' / Jets
		V419 MXE V378 MXE	5,000' / Props
	<b>PHL S Sats</b>	V433 DQO	5,000' / None
			4,000' / 180kts or less
	<b>LGA</b>	V433 DQO V479 RUUTH V123 RBV	12,000' / Turboprops
	<b>EWR</b>	V433 DQO V479 RUUTH V123 RBV	11,000' / Turboprops
		V419 MXE ARD V378 MXE ARD	5,000' / Piston
	<b>EWR Sats</b>	V433 DQO DQO029 V3 SBJ	12,000' / Turboprops
V419 MXE V3 V378 MXE V3		5,000' / Piston	
<b>WRI Sats</b>	ODESA OOD V312 CYN	5,000' / None	

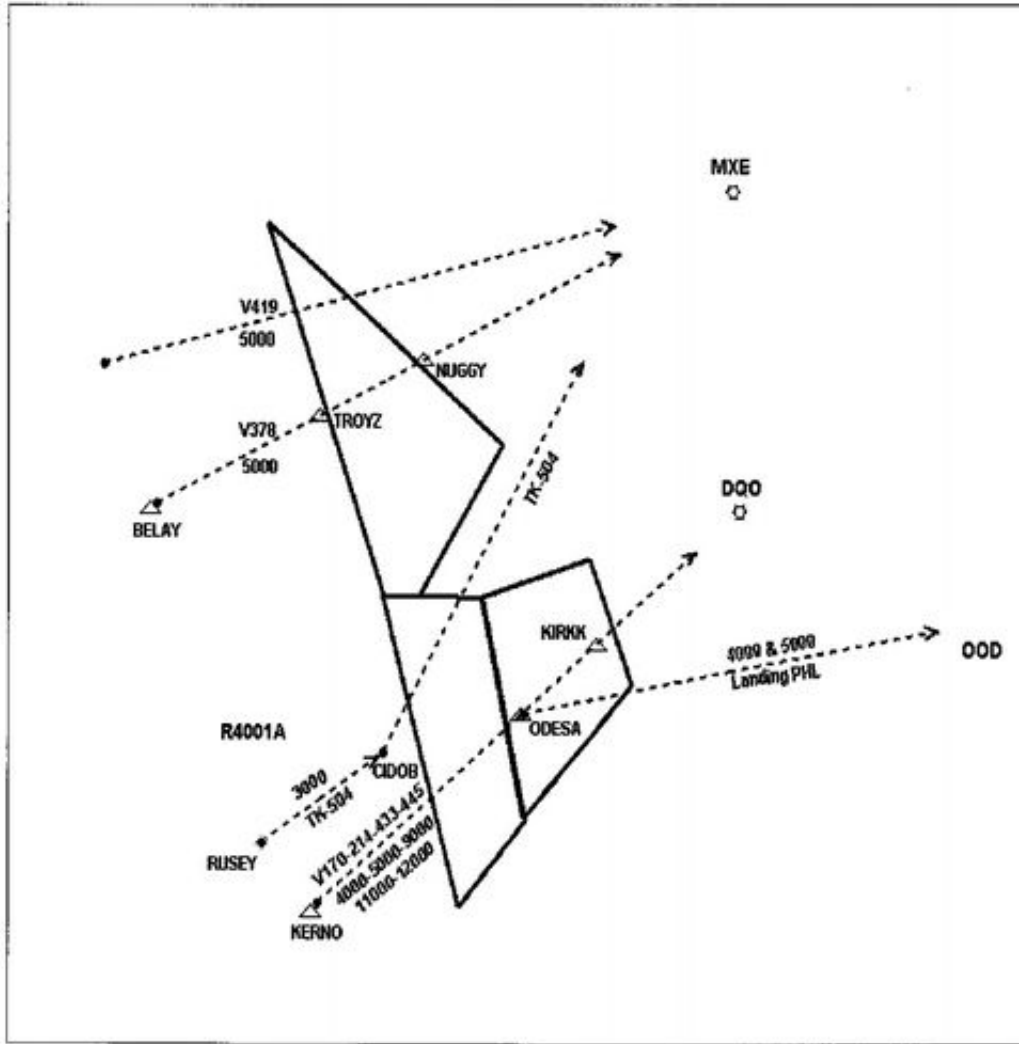
# Attachment 3 - Route Depiction, Area of Jurisdiction, and Procedures Chart

**Table 1** - Departures from DOV to PHL

From	Types	Route	Altitude Restriction
<b>DOV and Satellites</b>	Departures Requesting >FL180	MXE J110	7,000'
	PHL Arrivals	Direct DQO	7,000'
	PHL Satellites and Overflights	ENO V29 DQO or Direct DQO	5,000' or 3,000'
	Landing EVY	Direct	3,000'
	All	Direct ENO	3,000'
	EWR Satellites	V29 MXE V3 SBJ	5,000'



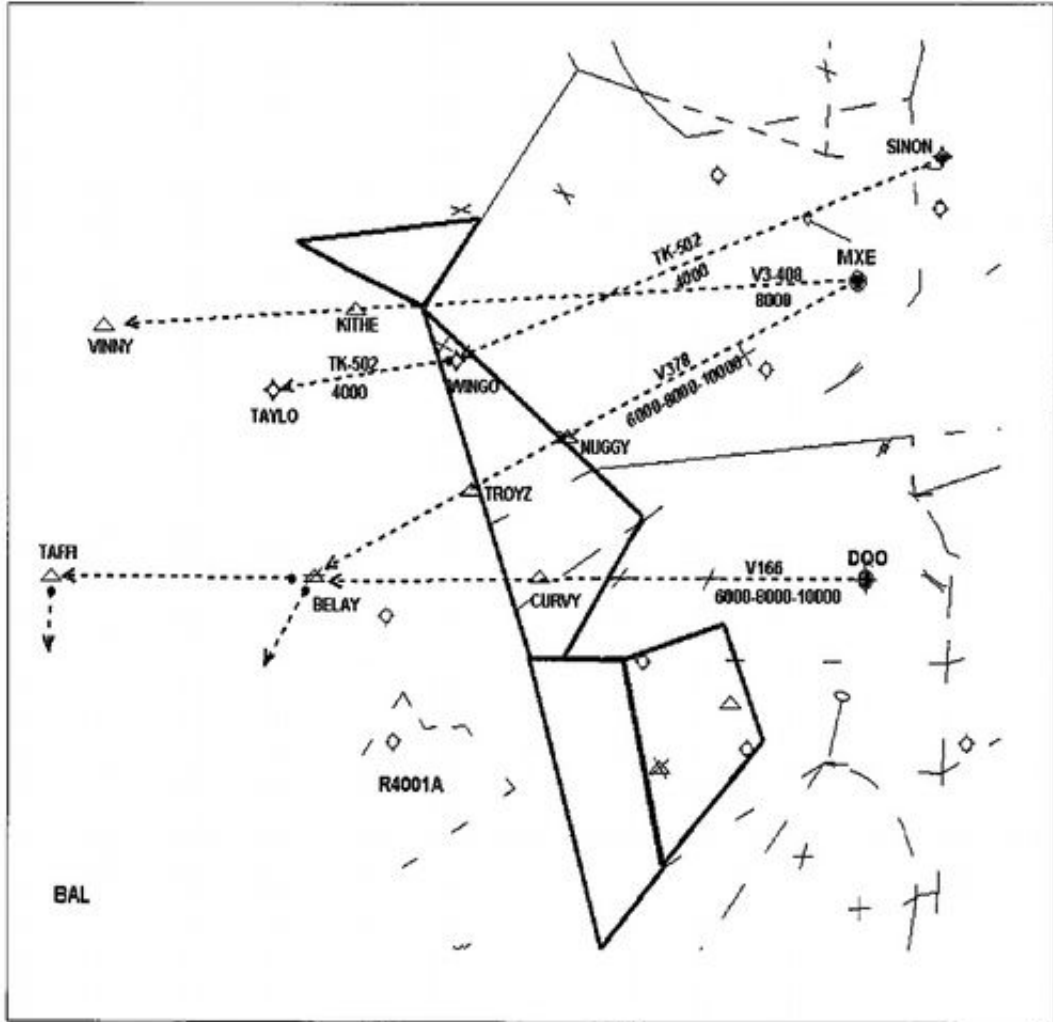
Attachment 4 - Terminal Enroute Control (TEC) from PCT Area to PHL Area



TRANSFER POINT

Approach Control Boundary Line

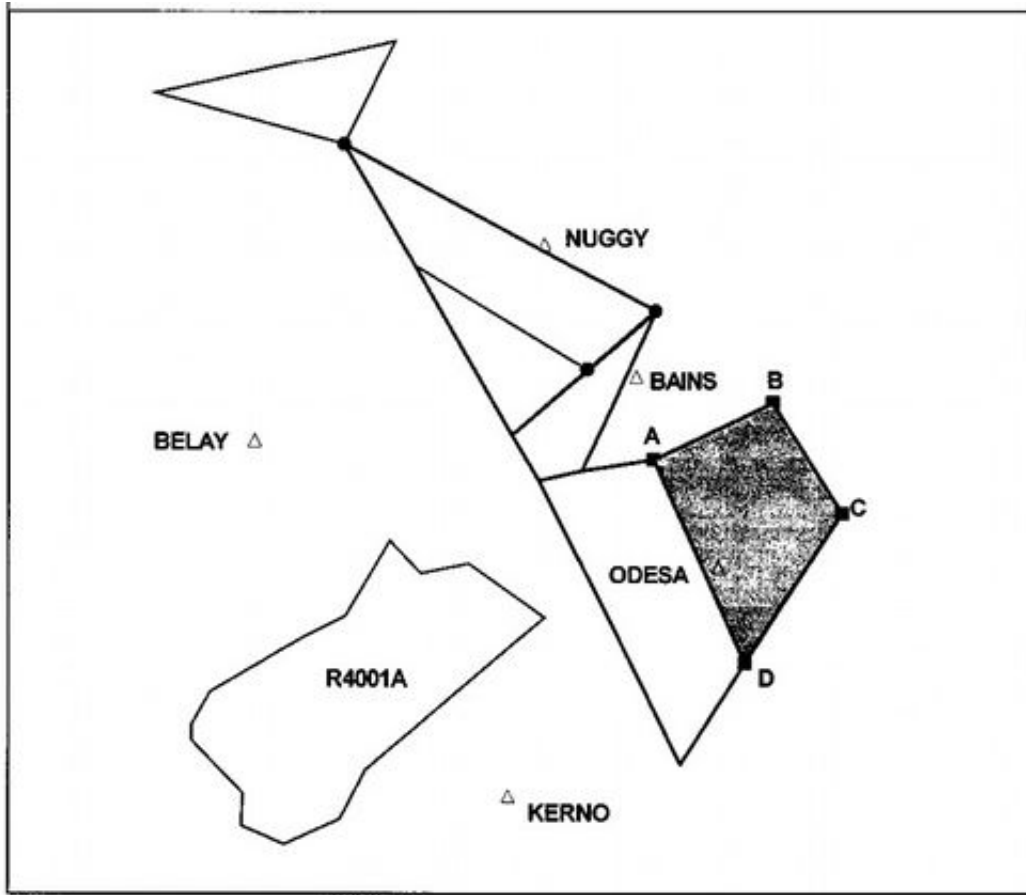
Attachment 5 - Terminal Enroute Control (TEC) from PHL Area to PCT Area



TRANSFER POINT

Approach Control Boundary Line

# Attachment 6 - ODESA Area Depiction and Description



**ODESA AREA Coordinates**  
A. 39 34' 24" / 75 53' 55"  
B. 39 37' 04" / 75 46' 31"  
C. 39 31' 52" / 75 42' 14"  
D. 39 24' 48" / 75 48' 15"

**Altitudes**  
When PHL delegates the ODESA  
(shaded) Area to PCT:  
4,000 through 9,000 feet

## Attachment 7 - Satellite Airports

Area	Abbreviation	Satellite Airport Codes
<b>Philadelphia Area North</b>	PHLN	CKZ, DYL, LOM, PNE, PTW, TTN, UKT, N10, N47, 3NJ6, 9N1
<b>Philadelphia Area South</b>	PHLS	EVY, ILG, MQS, OQN, N57, NJ74, 17N, 58M, 7N7
<b>ARD Area</b>		3NJ6, CKZ, DYL, UKT, PNE, TTN
<b>PTW/DQO Area</b>		OQN, 7N7, 58M, PTW, MQS, N10, ILG, N47, N57, LOM, EVY

© Copyright 2015 New York ARTCC and Washington ARTCC, All Rights Reserved.